



tDS-700 Series Quick Start

v1.4, Feb. 2018

What's in the box?

The package includes the following items:

tDS-700



tDS-700 Series
Module x 1

tDSM-700



Quick Start x1
(This Document)



CA-002 Cable x1

Related Information

- tDS Series Product Page:
http://www.icpdas.com/root/product/solutions/industrial_communication/pds/tds-700.html
- Documentation & Firmware:
<http://ftp.icpdas.com/pub/cd/tinymodules/napdos/tds-700/document/>
<http://ftp.icpdas.com/pub/cd/tinymodules/napdos/tds-700/firmware/>
- NS-205/NS-205PSE Product Page (optional):
http://www.icpdas.com/root/product/solutions/industrial_ethernet_switch/ns-205.html
http://www.icpdas.com/root/product/solutions/industrial_ethernet_switch/ns-105pse.html

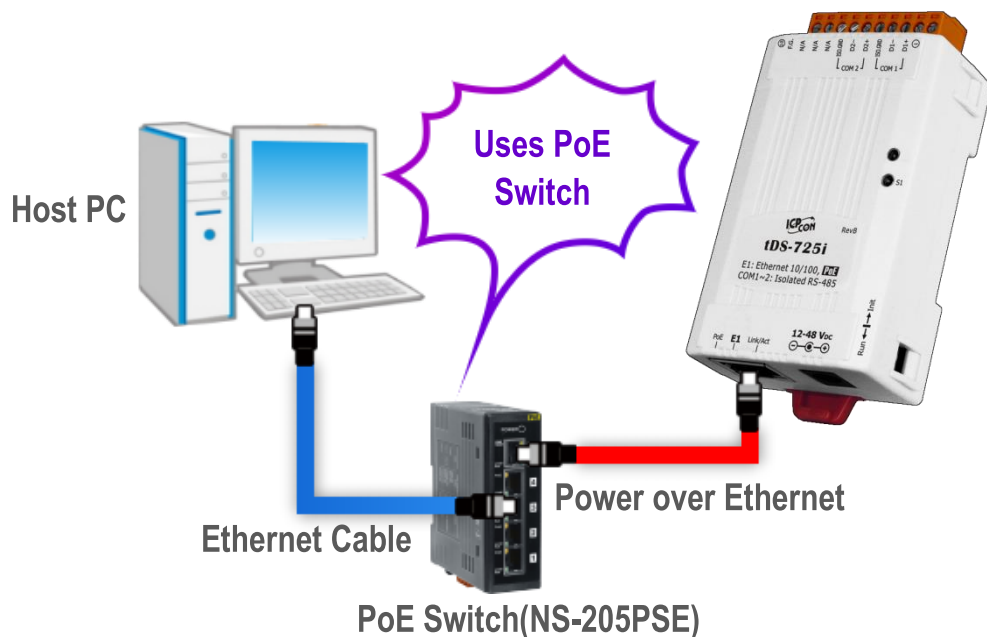
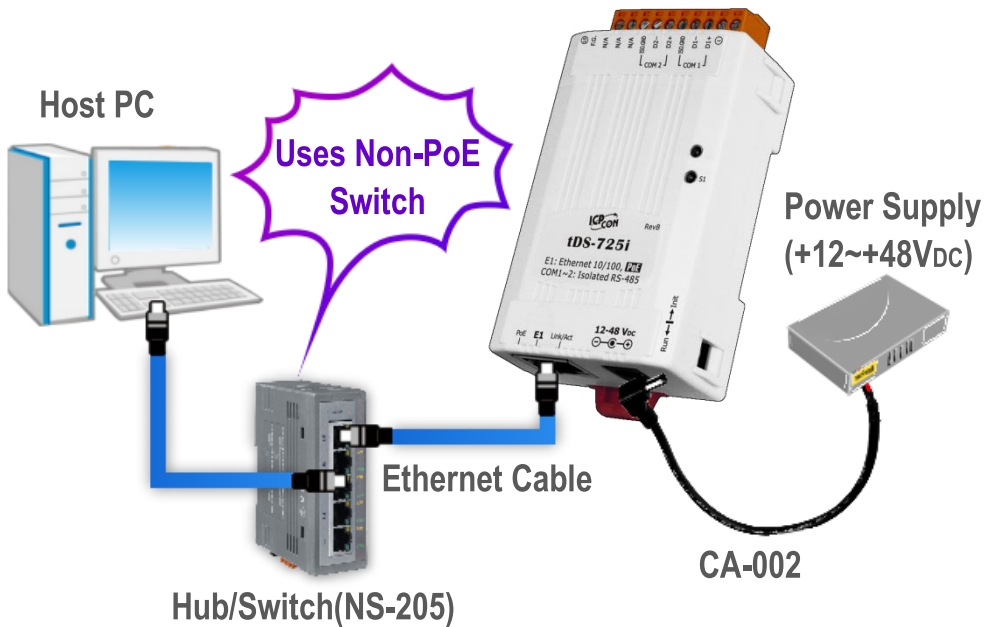
1 Connecting the Power and Host PC

1) Make sure your PC has workable network settings.

Disable or well configure your Windows firewall and Anti-Virus firewall first, else the “**Search Servers**” on **Chapter 4** may not work. (Please contact with your system Administrator)

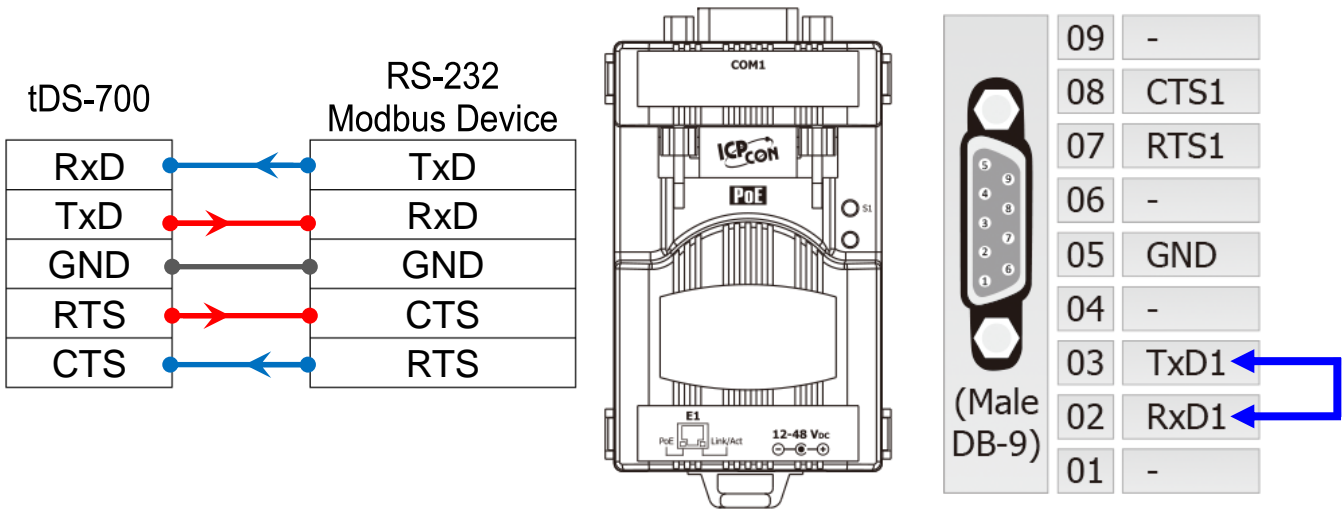
2) Connect both the tDS-700 and your PC to the same sub network or the same Ethernet switch.

3) Supply power (PoE or +12~+48 V_{DC}) to the tDS-700.

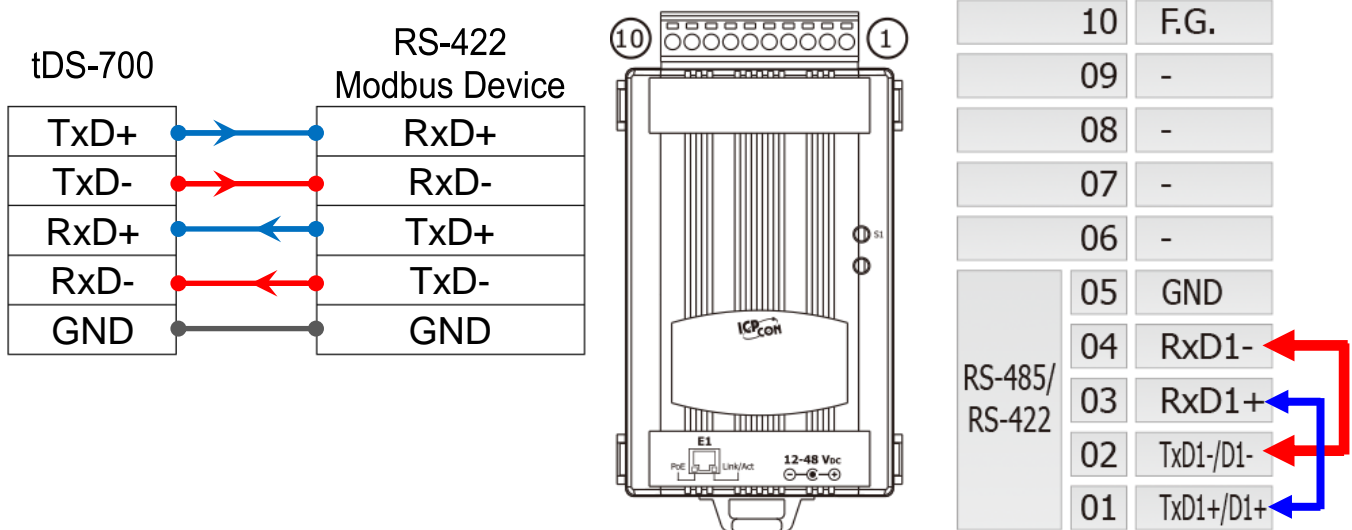


2 Self-Test Wiring

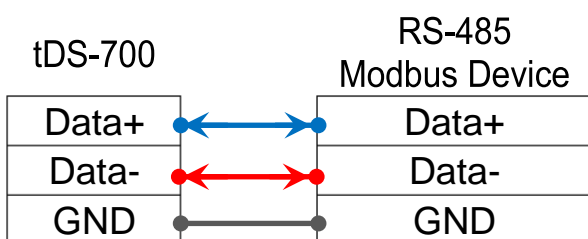
➤ RS-232 Wiring



➤ RS-422 Wiring



➤ RS-485 Wiring



While using RS-485 modules, you can **not** wire the Data+ with Data- signals for self-test. But you can test two RS-485 ports by wiring the Data1+ with Data2+ signals, and wiring the Data1- with Data2- signals. Then send data to one and receive data from another.

3

Installing Software on Your PC

Install VxComm Utility, which can be obtained from the web site:



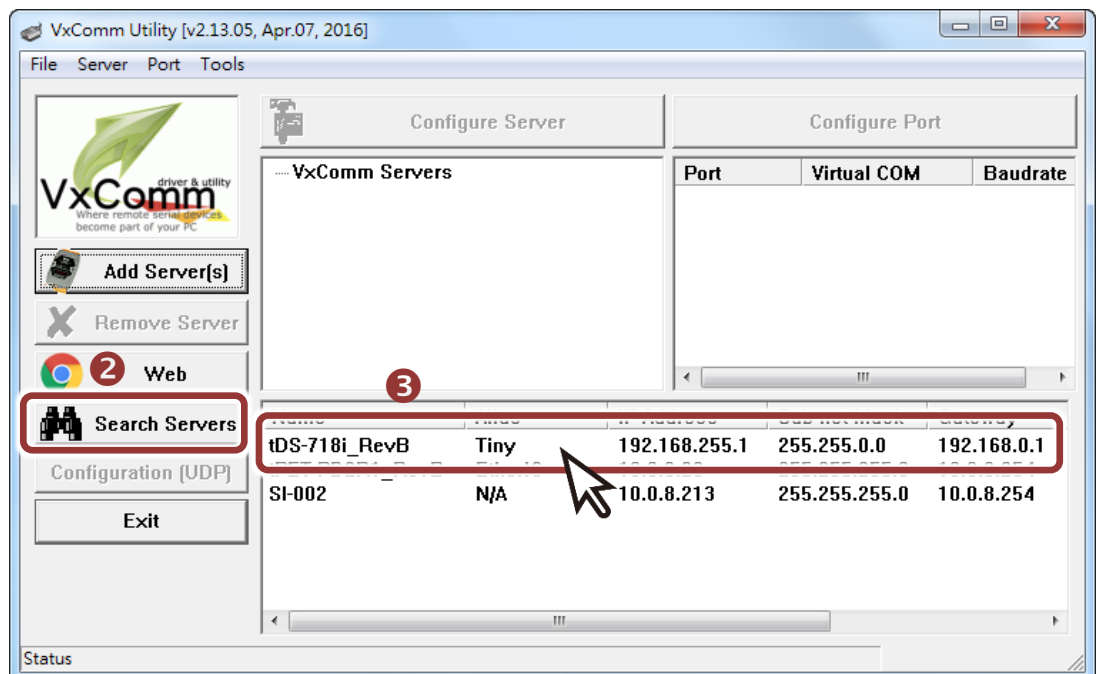
 http://ftp.icpdas.com/pub/cd/8000cd/napdos/driver/vxcomm_driver/windows/

 ftp://ftp.icpdas.com/pub/cd/8000cd/napdos/driver/vxcomm_driver/windows/

4

Configuring Network Settings

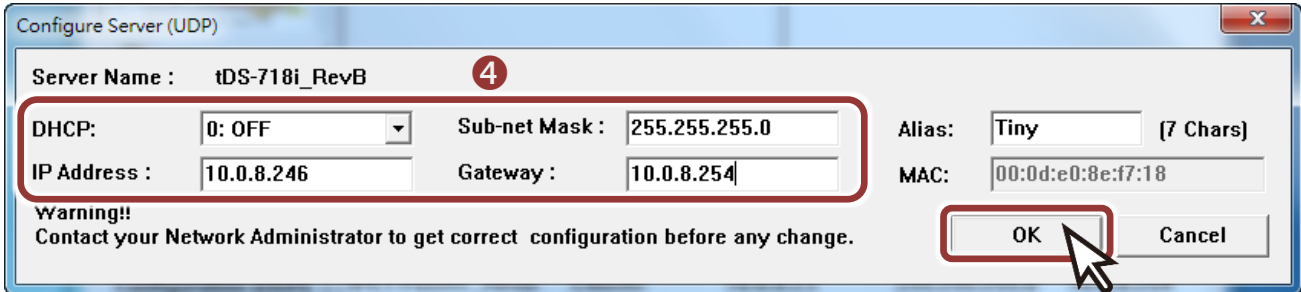
- 1) Double-click the VxComm Utility shortcut on the desktop.
- 2) Click the “**Search Servers**” to search your tDS-700.
- 3) Double-click the name of tDS-700 to open the “**Configure Server (UDP)**” dialog box.



Factory Default Settings of tDS-700:

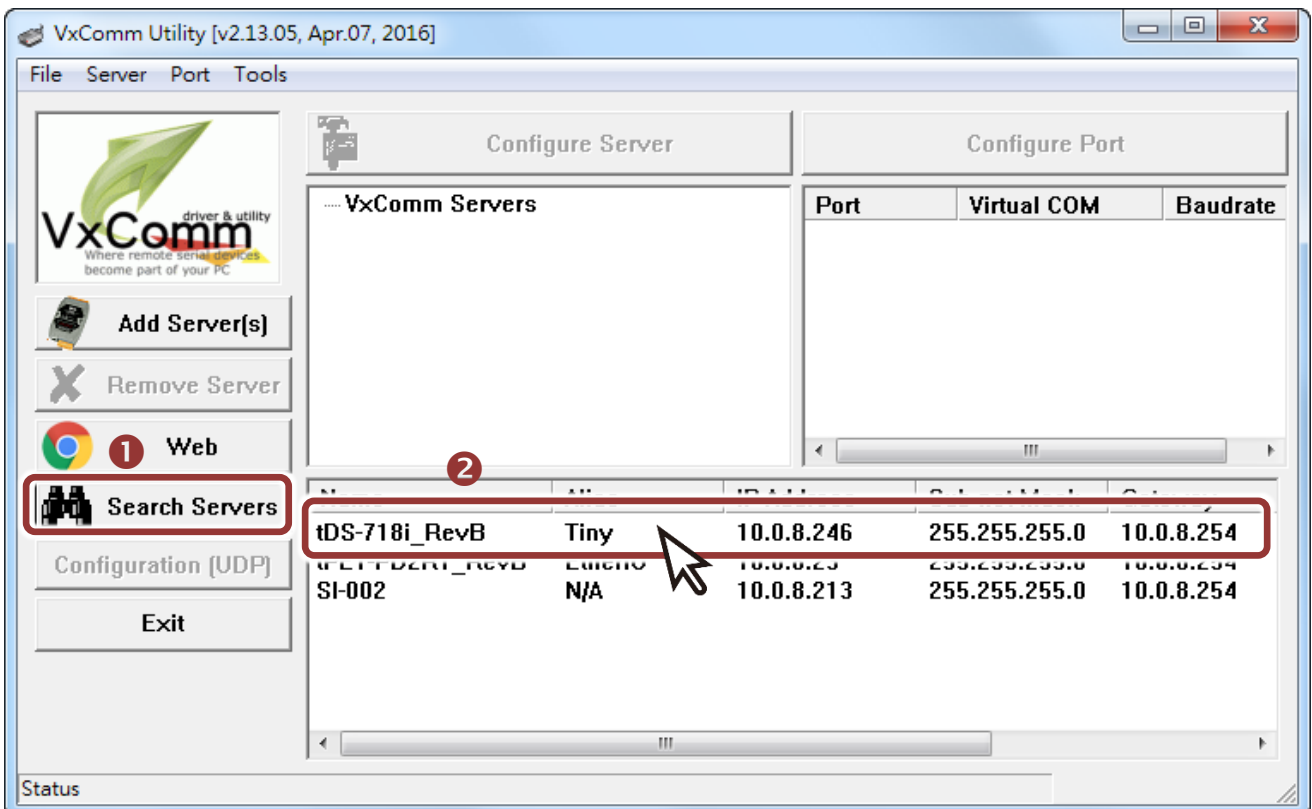
IP Address	192.168.255.1
Subnet Mask	255.255.0.0
Gateway	192.168.0.1

- 4) Contact your Network Administrator to obtain a correct network configuration (such as **IP/Mask/Gateway**). Enter the network settings and click “OK”. **⚠️ Note: The tDS-700 will use the new settings 2 seconds later.**



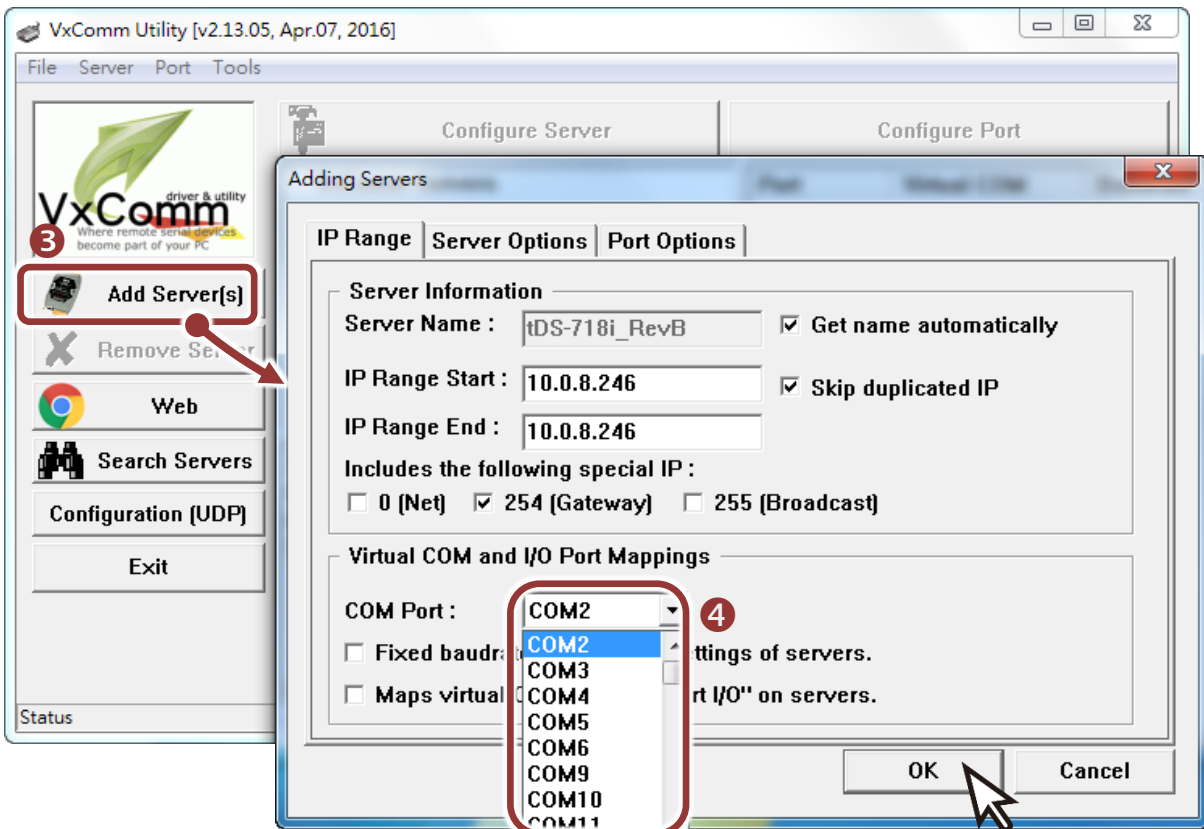
5 Configuring Virtual COM Ports

- 1) Wait 2 seconds and click “**Search Servers**” button again to ensure the tDS-700 is working well with new configuration.
- 2) Click the name of tDS-700 to select it.

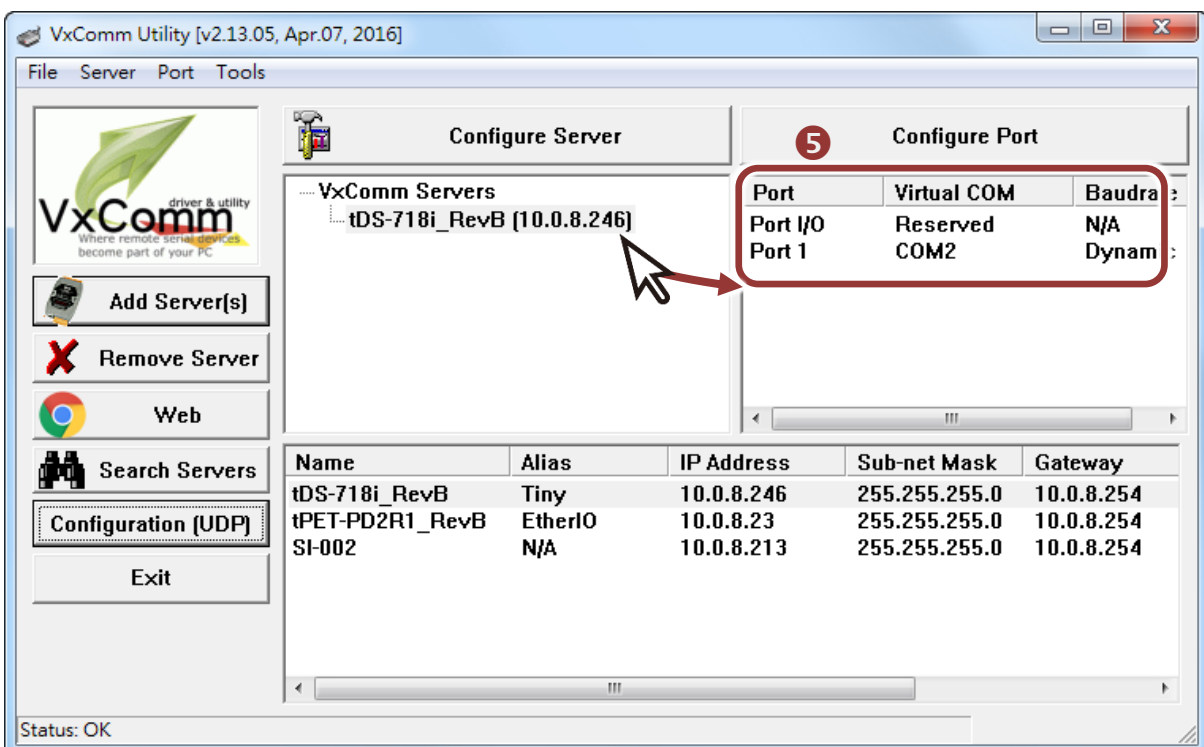


3) Click the “Add Server[S]” button.

4) Assign a COM Port number and click “OK” to save your settings.

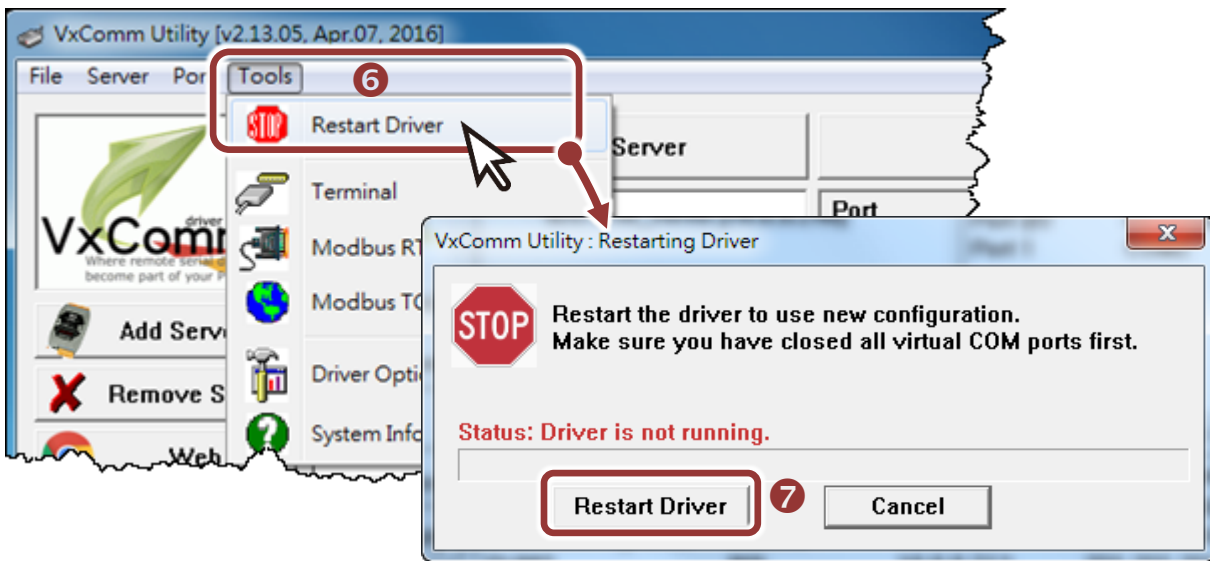


5) Click on tDS-700 name and check the virtual COM Port mappings on the PC.



6) Click the “Restart Driver” item in the “Tools” menu to display the “VxComm Utility: Restarting Driver” dialog box.

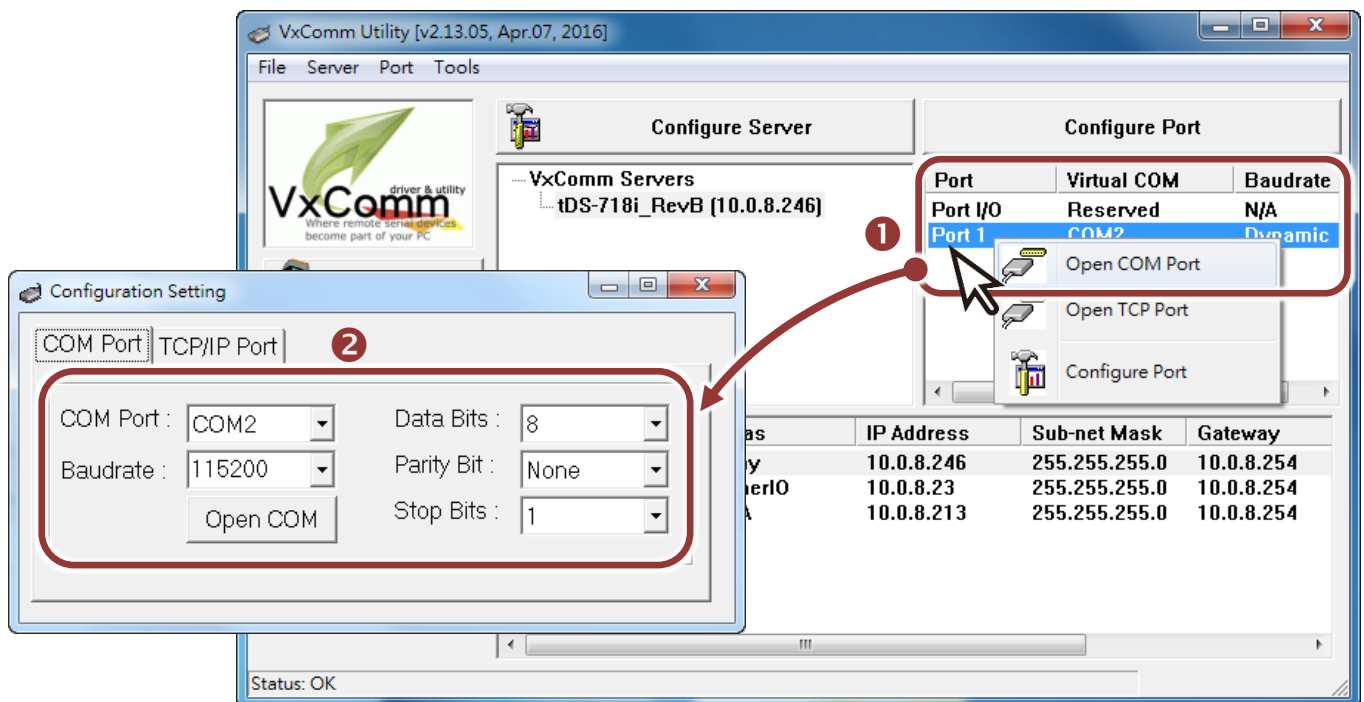
7) Click the “Restart Driver” button.



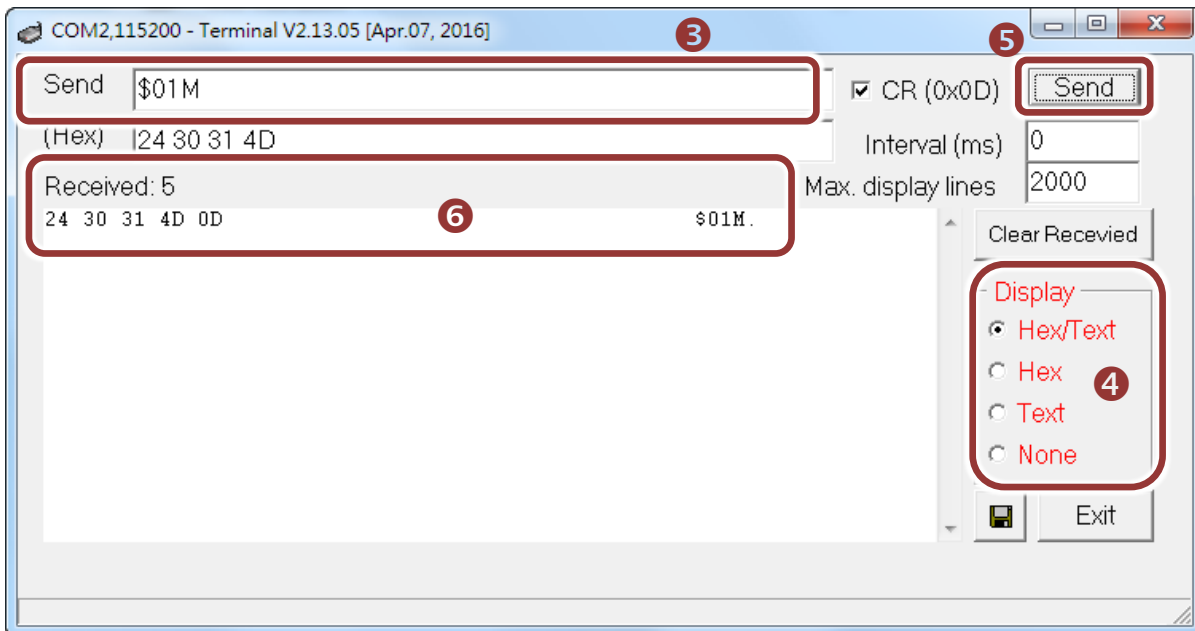
6 Self-Test

1) Right click Port1 and then choose the “Open COM Port” item.

2) Check that the configuration of the COM Port is correct and then click the “Open COM” button.



- 3) Type a string in the “**Send**” field.
- 4) Click the “**Hex/Text**” option in the “**Display**” section.
- 5) Click the “**Send**” button to send the message.
- 6) If a response is received, it will be displayed in the received field.



Note that if you intend to use Internet Explorer, ensure that the cache function is disabled in order to prevent browser access errors, please disable your Internet Explorer cache as follow: **(If you are not using IE browser, please skip this step.)**

Step1: Click “**Tools**” >> “**Internet Options...**” in the menu items.

Step 2: Click “**General**” tab and click the “**Settings...**” button in Temporary Internet files frame.

Step3: Click “**Every visit to the page**” and click the “**OK**” in Settings box and Internet Options box.

For more detail, refer to [“FAQ: How to avoid a browser access error that causes a blank page to be displayed when using Internet Explorer”](#)