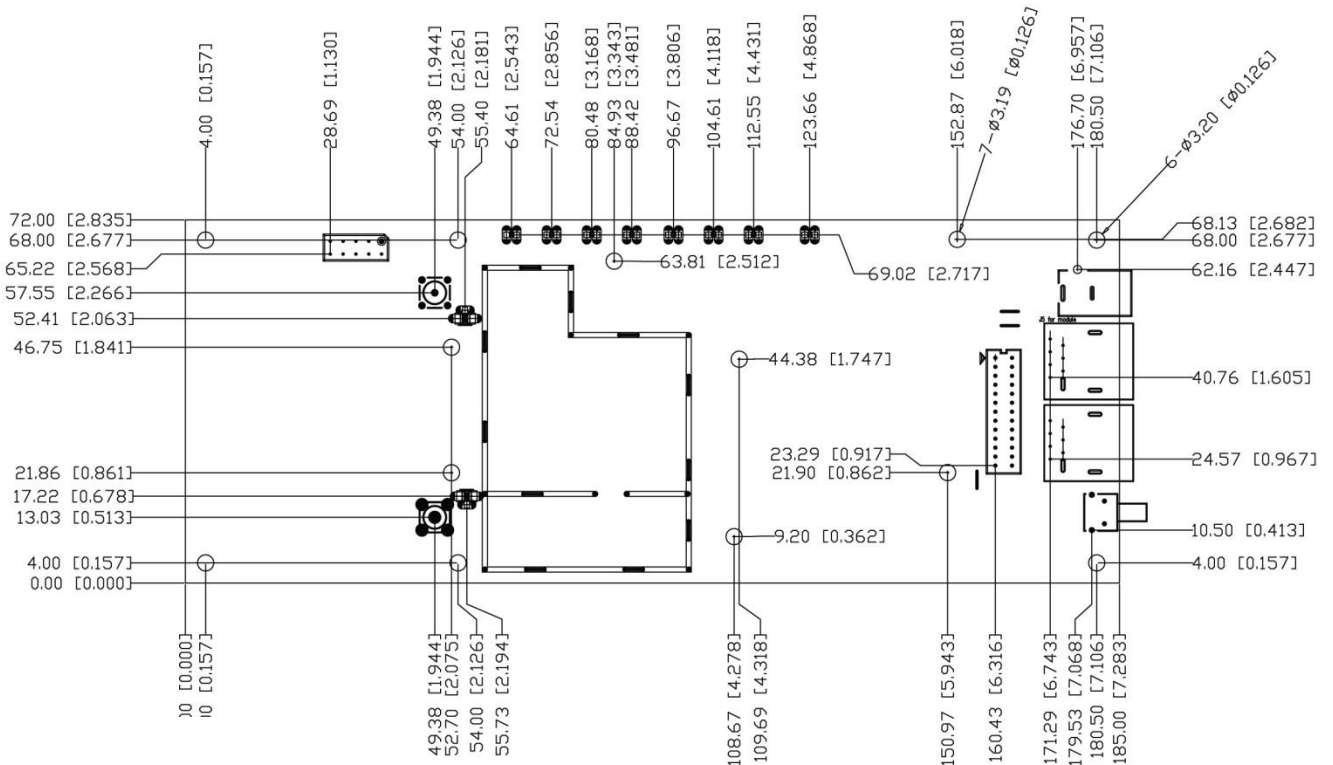


N2 PCBA

802.11n 2x2 Long-Range Outdoor MIMO AP/CPE



N2 PCBA

802.11n 2x2 Long-Range Outdoor MIMO AP/CPE

Specifications:

| | | | | | | |
|--------------------|---|----------------|----------------|------------|--------|----------|
| CPU | Atheros AR7240 | | | | | |
| Flash | 8MB | | | | | |
| RAM | 32MB | | | | | |
| Interface | 2 x RJ45 & 1x Reset | | | | | |
| LED | Power / WLAN / WAN / LAN / Signal Strength | | | | | |
| Output Power (dBm) | 802.11b | 1Mbps | 29 ± 1.5 | 802.11g | 6Mbps | 29 ± 1.5 |
| | | 2.2Mbps | 29 ± 1.5 | | 24Mbps | 29 ± 1.5 |
| | | 5.5Mbps | 29 ± 1.5 | | 36Mbps | 28 ± 1.5 |
| | | 11Mbps | 29 ± 1.5 | | 54Mbps | 28 ± 1.5 |
| | 802.11n | MCS0 | 29 ± 1.5 | | | |
| | | MCS3 | 29 ± 1.5 | | | |
| | | MCS6 | 26 ± 1.5 | | | |
| | | MCS9 | 29 ± 1.5 | | | |
| | | MCS12 | 28 ± 1.5 | | | |
| | | MCS15 | 25 ± 1.5 | | | |
| Sensitivity (dB) | 802.11b | 1Mbps | -95 | 802.11g | 6Mbps | -90 |
| | | 2.2Mbps | -94 | | 24Mbps | -82 |
| | | 5.5Mbps | -92 | | 36Mbps | -80 |
| | | 11Mbps | -90 | | 54Mbps | -75 |
| | 802.11n | MCS0 | -91 | | | |
| | | MCS3 | -83 | | | |
| | | MCS6 | -74 | | | |
| | | MCS9 | -89 | | | |
| | | MCS12 | -80 | | | |
| | | MCS15 | -72 | | | |
| Operation Mode | AP | Client | WISP | WDS Bridge | | |
| Software | Site Survey Bandwidth Control SNMP v1/v2 support adjustable output power Distance Adjustment Radius (802.1x) | | | | | |
| UART | Pin 1: Vcc3.3v | Pin 2: UART RX | Pin 3: UART TX | Pin 4: GND | | |
| Size | Weight | | | | | |
| Power Supply | PoE 18V/1 A | | | | | |